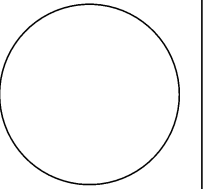


CONSULTANT:



**IOWA DEPARTMENT OF
NATURAL RESOURCES**

ENGINEERING SERVICES - WALLACE BUILDING
502 E. 9TH ST., DES MOINES, IA 50319-0034



PROJECT LOCATION MAP

GREEN ISLAND AND PRINCETON LEVEE REPAIRS

MAQUOKETA WILDLIFE UNIT

JACKSON AND SCOTT COUNTY

NO. BY REVISION

NO.	BY	REVISION

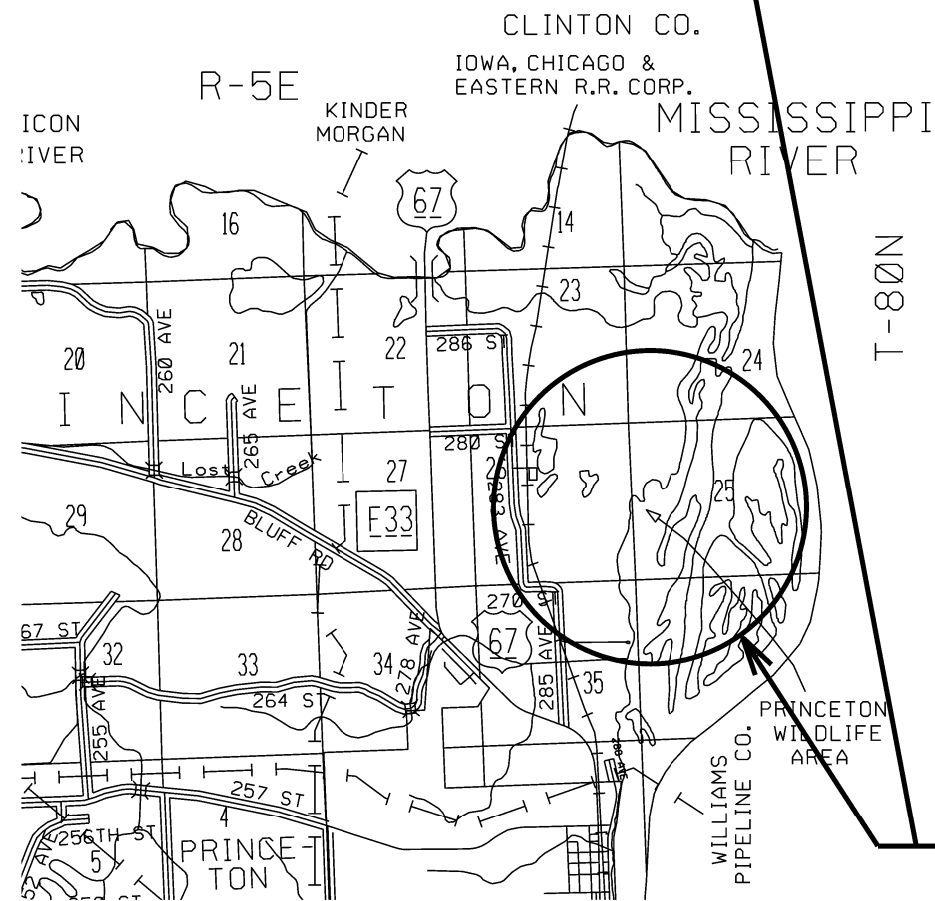
DRAWN BY: PROJECT NUMBER:

21-06-49-01

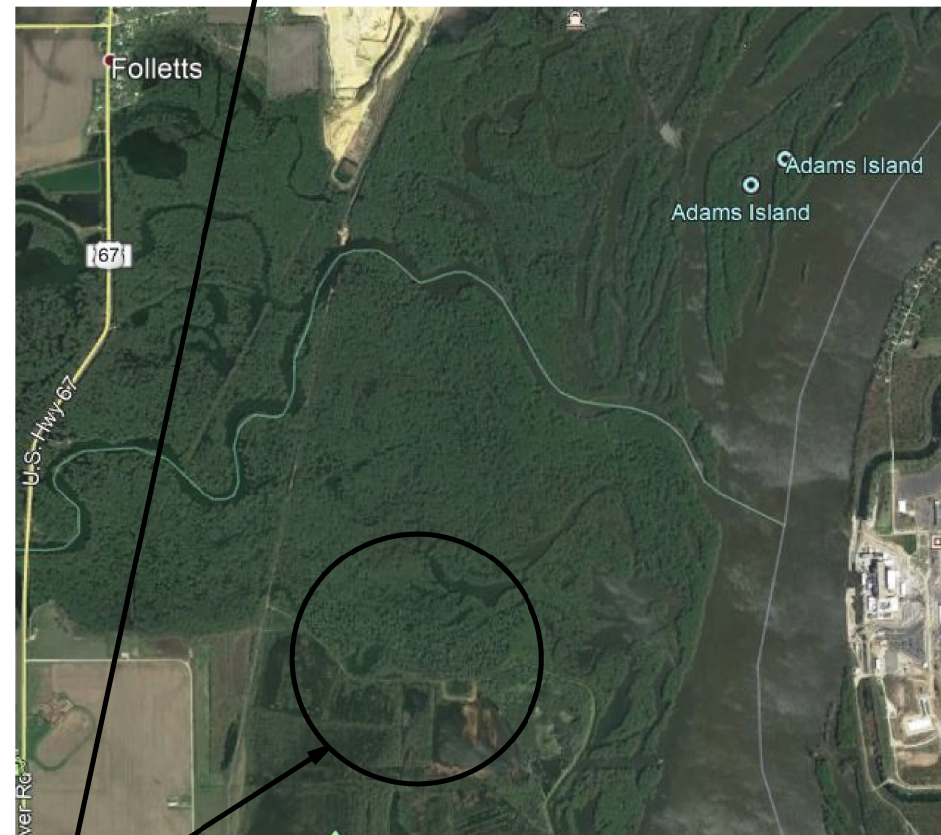
CHK'D BY: DATE:

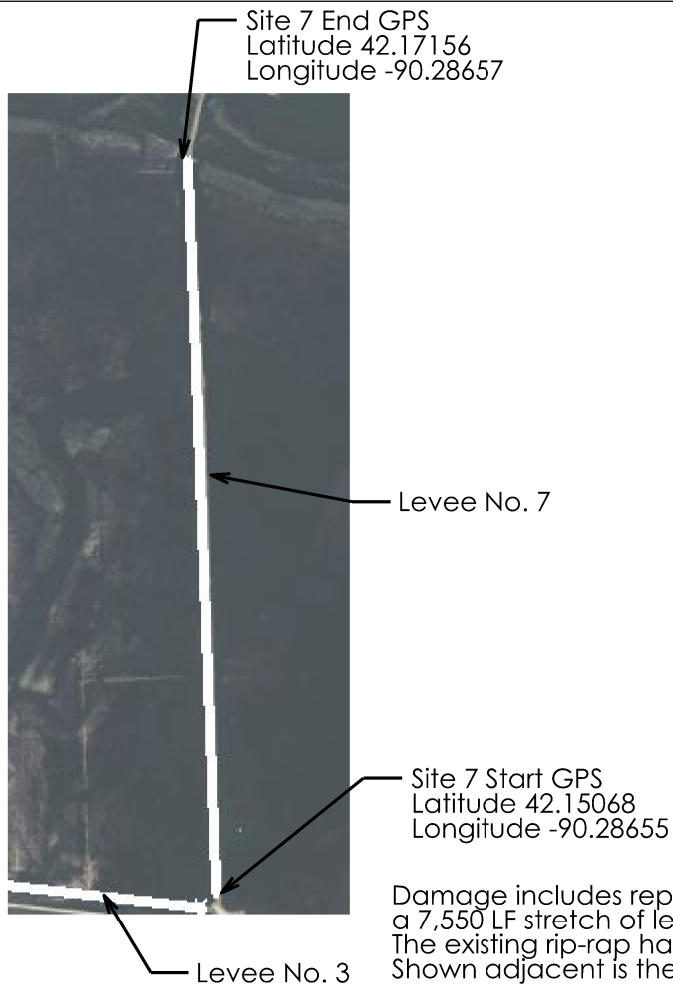
SHEET No:

2



PROJECT LOCATION





- Repair work includes
1. Clear, grub and strip vegetation to 6-inch depth.
 2. Level out all washout areas where possible.
 3. Place unclassified fill along levee edge (estimate at 4" depth by 15' wide) to fill in areas that need additional material to reestablish original side slopes.
 4. Place engineering fabric.
 5. Place Class E revetment along edge (15' wide and a depth of 2')

Damage includes repair of washouts along a 7,550 LF stretch of levee called the 4th Ditch Dike. The existing rip-rap has been displaced as well. Shown adjacent is the location of the flood damage.



Site 7 - 4th Ditch Dike



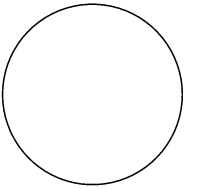
- Repair work includes:
1. Clear, grub and strip vegetation to 6-inch depth.
 2. Level out all washout areas where possible.
 3. Place unclassified fill along levee edge (estimate at 4" depth by 15' wide) to fill in areas that need additional material to reestablish original side slopes.
 4. Seed with an erosion control mix.
 5. Place erosion control matting.

Damage includes repair of washouts along a 3,405 LF stretch of levee within Princeton WMA. Above is a location of the flood damage.



Site 8 - Princeton Levee

CONSULTANT:



**IOWA DEPARTMENT OF
NATURAL RESOURCES**

ENGINEERING SERVICES - WALLACE BUILDING
502 E. 9TH ST., DES MOINES, IA 50319-0034



LEVEE REPAIRS AT SITE 7 & 8

GREEN ISLAND AND PRINCETON LEVEE REPAIRS

MAQUOKETA WILDLIFE UNIT

JACKSON AND SCOTT COUNTY

NO.	BY	REVISION

DRAWN BY: PROJECT NUMBER:
21-06-49-01

CHK'D BY: DATE:

SHEET No:

6

